

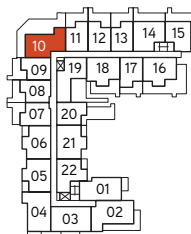
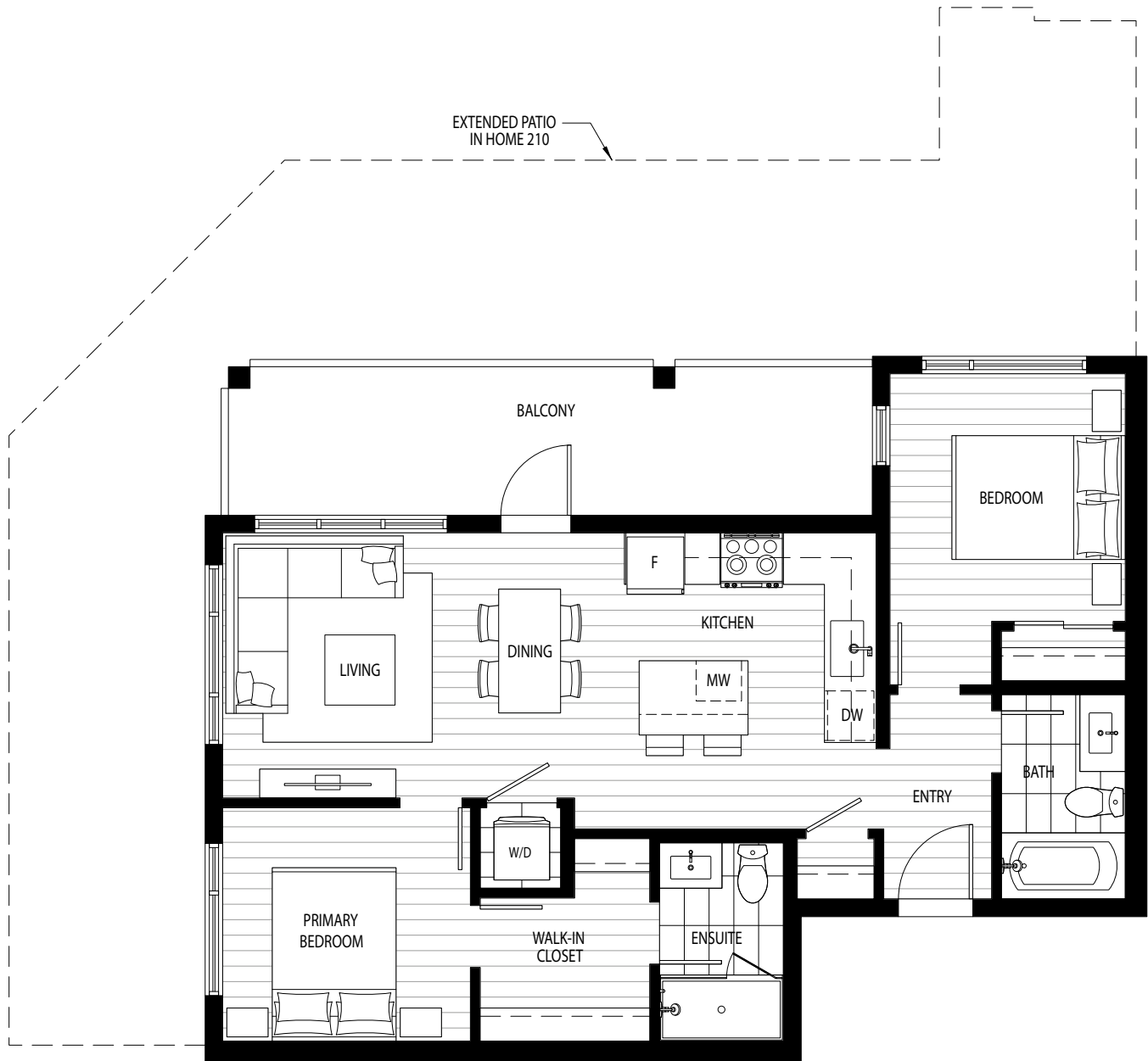


# PLAN WD5

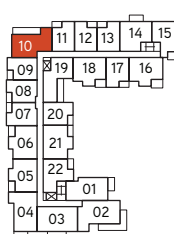
2 BEDROOMS • 2 BATHROOMS

INTERIOR: 798 sq. ft.  
PATIO (L2): 743 sq. ft.  
BALCONY (L3-6): 163 sq. ft.

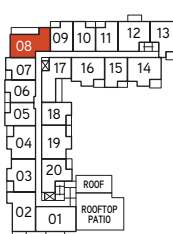
LUPINE  
WALK SEYMOUR  
VILLAGE



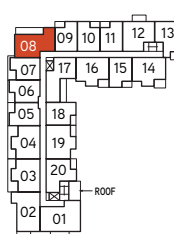
LEVEL 2



LEVELS 3 - 4



LEVEL 5



LEVEL 6



TAKaya

AQUILINI

MARKETING BY  
rennie

The Developer reserves the right to change the features, finishes, sizes, dimensions and layouts as shown on the Floor Plans in accordance with the terms of the Purchase Agreement with a purchaser. The renderings are the artist's interpretation and the furniture shown above are not included in the Purchase Price of a Project Unit. E.&O.E.